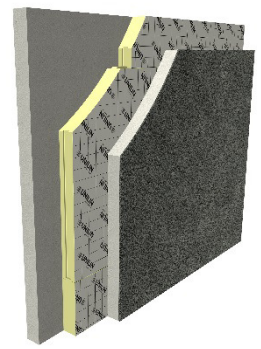


UTHERM Concrete PIR CA



UTHERM Concrete PIR C is an insulation board that consists of a polyisocyanurate core with a multilayer aluminium complex facing on both sides. These boards are alkaline(concrete-) resistant.

Characteristics

Facing	CA: concrete resistant gastight low emissivity aluminium composite foil
Core	PIR (polyisocyanurate)
Edges	Straight on 4 sides
Thickness	T2 (EN13165)
Dimensions	2400 mm x 1200 mm as standard size
Squareness	Sb ≤ 5mm/m
Flatness	Långd: ≤ 2,5m Area: ≤0.75m ² : Tolerances: ≤ 5mm Area: ≥0.75m ² : Tolerances: ≤ 10mm
Thermal conductivity : λ_D	0,022 W/mK
Compressive strength	Exceeds 150 kPa
Tensile strength	Exceeds 80 kPa
Dimensional stability under specified temperature and humidity conditions 48h, 70°C, 90%RV 48h, -20°C	DS(70,90)3: Δel,b≤2 / Δed≤6 DS(-20,-)1: Δel,b≤1 / Δed≤2
Deformation under pressure and temperature	DLT(2) ≤ 5%
Weight	32kg/m ³ ±3kg/m ³
Vapour diffusion resistance factor μ	50-100
Fire performance	F in accordance with EN 13165
Logterm waterabsorption	WL(T)2

Products

Thickness [mm]	R _D - value [m ² K/W]
50	2,25
60	2,70
70	3,15
80	3,60
82	3,70
90	4,05
92	4,15
100	4,50
110	5,00
120	5,45

UTHERM roof PIR | insulation boards come with the technical approval SUNDAHUS & Byggvarubedömningen, CE-mark and an Environmental Declaration.



UNILIN, division insulation - Waregemstraat 112 - B-8792 Waregem
 T +32 56 73 50 91 – F +32 56 73 50 90 – E info.insulation@unilin.com
 W www.unilininsulation.com
 H.R Kortrijk 87.153 – BTW BE 0405 414 072